

GO-GO

ELITE TRAVELLER®

THE QUICKEST WAY
TO TRAVEL.

GO-GO ELITE TRAVELLER®

The Go-Go Elite Traveller®'s compact design allows it to manoeuvre easily in tight spaces while providing stable outdoor performance. Take the guesswork out of travel with simple, one hand Feather-touch disassembly. Go where you want to go, easily, with the Go-Go Elite Traveller.



Pride[®]
Mobility Products Ltd.

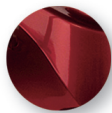
(Tel) 01869 324 600 • (Fax) 01869 323 070 • www.pridemobility.co.uk

Go-Go Elite Traveller®	3-wheel	4-wheel
Weight capacity:	125 kg (19.5 Stone)	125 kg (19.5 Stone)
Maximum speed ² :	Up to 6 km/h (4 mph)	Up to 6 km/h (4 mph)
Ground clearance ¹ :	6.35 cm (2.5") at midframe	6.35 cm (2.5") at midframe
Turning radius ¹ :	82.5 cm (32.5")	110 cm (43.25")
Overall length ¹ :	91 cm (36")	101 cm (39.75")
Overall width ¹ :	49 cm (19.25")	49 cm (19.25")
Tyres:		
Front:	5 cm x 20 cm (2" x 8") solid	5 cm x 18 cm (2" x 7") solid
Rear:	6.35 cm x 20 cm (2.5" x 8") solid	6.35 cm x 20 cm (2.5" x 8") solid
Anti-tips:	Rear	Rear
Transport weight:		
Total weight w/o battery pack:	34 kg (75 lbs.)	35.5 kg (78.5 lbs.)
Heaviest piece when disassembled:	12.75 kg (28 lbs.) (front section)	14.75 kg (32.5 lbs.) (front section)
Drive System:	24-volt DC motor, sealed mini-transaxle	
Dual Braking System:	Electronic, regenerative, and electromechanical	
Standard seating:	Foldable, compact, vinyl-covered molded plastic	
Battery Charger:	Off-board, 2-amp	
Battery Requirements ³ :	Two 12-volt, deep cycle (standard) Size: 2 x 12 AH or optional 2 x 18 AH Weight: 12 AH: 9 kg (20 lbs.) battery pack 18 AH: 13 kg (29 lbs.) battery pack	

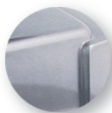
Standard Colours:



Blue



Red



Silver

3 sets of colours with every scooter!

Optional Colours available in colour pack (4-wheel version only):



Solar Yellow



Gator Green



Orange



Primitive Purple



Pink

Features

- Feather-touch disassembly permits simple frame separation with only one hand
- Pride's exclusive black non-scuffing tyres with tri-spoke wheels
- Auto-connecting front to rear cable
- Includes 3 sets of easily changeable coloured panels in 3 exciting colours - Red, Blue and Silver
- Front frame-mounted seat post offers maximum stability
- All-new frame design easily disassembles into 5 super lightweight pieces for convenient transport and storage
- Modular design for easy serviceability
- Microprocessor-based controller offers optimal power management and added safety features
- Standard front tiller-mounted basket included
- Removable deck basket for additional storage (4-wheel only)
- Convenient off-board dual voltage charger can charge battery pack on-board or off-board
- Battery packs contain 2 x 12 volt batteries to power the 24 volt system

Options

- 18 amp battery pack for increased range
- Additional 12 amp battery pack
- Cup holder
- Interchangeable "click-on/click-off" panels available in packs of 5 additional colours



Feather-touch disassembly

¹ Due to manufacturing tolerances and continued product improvement, this specification is subject to a variance of +/- 3%.

² Speed and range vary with user weight, terrain type, battery charge, battery condition and tyre pressure.

³ Battery weight may vary based on manufacturer.

The information contained herein is correct at the time of publication; due to the manufacturers commitment to constant improvement and development, they reserve the right to alter specifications without prior notice. Theoretical range is calculated under test conditions in accordance with European standards. Actual range in normal use will depend on many factors, including the condition of the vehicle and its batteries, the weight of the driver, correct tyre pressure, ambient temperature, and the gradient and surface of the road or pavement.

