

# multi

b a r i



Part of the:

multi  
range



The adaptable chair solution!  
Designed for **multi**ple users.

# multi b a r i

The Multi range is a new innovation in dynamic frame and chair design.

The Multi range is the most adaptable and flexible furniture we have been asked to design by healthcare professionals. Their challenge was to find a cost effective solution to the demands of changing care needs, infection control and efficiency; our answer is the **Multi range**.

The Multi range is a break through in both frame and cushion construction. These chairs can be fully adapted by the healthcare team in the home or on the ward. Each chair can be quickly and easily customised for different users or for an individual as their care needs change over time.

The Multi frame and full range of compatible cushions gives you complete flexibility and control. Separately reposition the waterfall back cushions, provide more support with foam blockers and adjust the padding in each cushion to meet the specific needs of the individual you are caring for. Adapt the chair over time to provide more support or pressure care or redesign the chair for a new person. The Multi range just keeps on working.

The **Multi Bari** is our Bariatric Multi rise and recline chair. In the Multi range we also have Standard rise and recline and Porter styles.



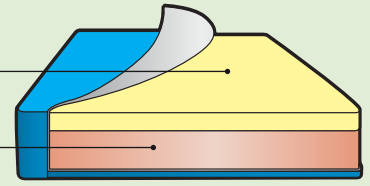
## Multi Bari seat options for pressure management.

All cushions are covered in multi-way stretch, vapour permeable fabric which is wipeable, removable, washable at 95°C, incontinence proof and breathable.

### Viscoform

- Memory foam (std)
- Reflex foam

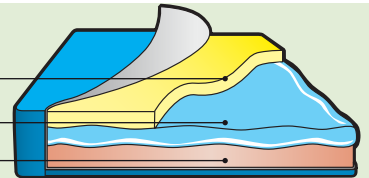
Pressure Risk **LOW MEDIUM**



### Liquiform

- Memory foam
- Liquid gel sac
- Reflex foam

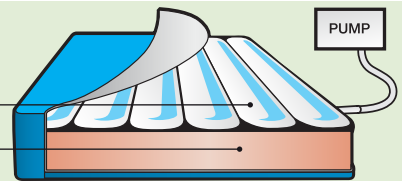
Pressure Risk **MEDIUM HIGH**



### Dynaform

- Tripos alternating air cushion
- Reflex foam

Pressure Risk **VERY HIGH**



#### Air cell features

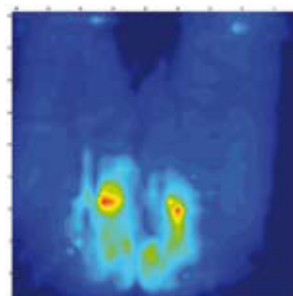
- For users up to 40 stones (255kg)
- Full cycle 15 minutes, every 7 minutes cells change

## Pressure mapping

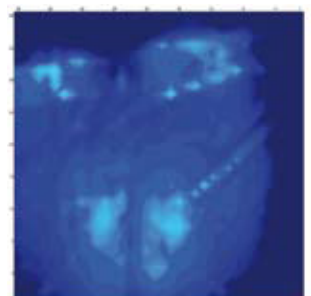
All seat designs undergo rigorous pressure mapping testing to ensure we achieve the highest standards possible. A mat of pressure sensors is applied to the seat. The matrix of sensors quantifies the surface pressure between a person and the support surface the chair provides. The results provide a map for analysis by clinicians who can then advise our design teams. The aim is to ensure that pressure is as evenly distributed as possible and that the maximum area of the thighs and buttocks is supported as at low an interface pressure as possible.

For more details about our pressure mapping reports please do contact us.

### Poor pressure distribution



### Good pressure distribution



Note: Users with pressure relief needs or concerns are advised to seek the advice of a tissue viability clinician on the most suitable level of pressure relief for their medical requirements.

### Considered users:

- Heavier weight users.
- With progressive conditions, who require pressure care management.
- Who have Oedema legs or fluid build up in legs.
- Who have difficulty in stand to walk position.



## Key features

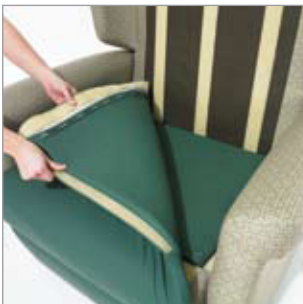
Innovative and dynamic design that solves the challenge of continual changing care demands.

- 1 Separate waterfall back cushions can be individually repositioned for comfort and support.
- 2 Back cushions can be adapted with blockers to provide extra support, shaped for the person using the chair.
- 3 Flat wide arms for deep comfort and support.
- 4 Choose internal seat cushions constructed from a range of specialist pressure care materials for advanced pressure management.
- 5 The seat and leg chaise are generously padded with memory foam for comfort and support and can be easily removed for cleaning.
- 6 Back and seat cushions are upholstered in a vapour permeable multi-way stretch fabric, to aid pressure care. The fabric is washable at 95°C and available in a range of colours.
- 7 A loop for the handset and a deep pocket are positioned for ease of use.
- 8 Fitted with a dual motor mechanism with a weight limit of 40 stones (255kg) and a leg rest with a capacity of 25 stones (160kg).

### Designed for multiple care settings:

- Hospital or ward enhancement.
- Nursing or residential care.
- Home care.

## Care features



Maintain the highest hygiene standards with quick change covers and replacement cushions to extend the use of your Multi Bari.



Interchangeable seat cushions allow you to adapt the Multi Bari for each new user's pressure care or support needs.



Adapt each back cushion with blockers to adjust the shape and support for the specific needs of each user.



Flexible positioning of the three waterfall cushions to get the shape of the back right for each user, with adjustable back padding in all cushions.

The Multi Bari, the hardest working bariatric rise and recline chair available.  
An effective, efficient and value for money solution.

## Available sizes

	Seat Height	Seat Width	Seat Depth
SMALL	18" (46cm)/ 20" (51cm)	24" (61cm)	18" (46cm)/ 20" (51cm)/ 22" (56cm)
MEDIUM	18" (46cm)/ 20" (51cm)	26" (66cm)	18" (46cm)/ 20" (51cm)/ 22" (56cm)
LARGE	18" (46cm)/ 20" (51cm)	28" (71cm)	18" (46cm)/ 20" (51cm)/ 22" (56cm)
X-LARGE	18" (46cm)/ 20" (51cm)	30" (76cm)	18" (46cm)/ 20" (51cm)/ 22" (56cm)

## Fabric options

- Waterproof
- Anti MRSA
- Anti Bacterial
- Anti Fungal
- Crib 5
- Bleach cleanable
- Vinyl.



The fabric options shown in this brochure: Panvelle Stretch Corellian Trellis Green with a Plain Green vapour permeable stretch seat and cushion cover.

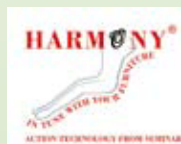
## Guarantees

The Repose Multi Bari comes with the following guarantees:

- 2 Year electrical warranty for the recliner mechanism.
- 1 Year warranty on alternating seat cushions.
- 1 Year warranty on the upholstery and frame.\*

\*Full terms and conditions available upon request

Recommended stockist:



tel: 028 9187 0033  
f: 028 9187 0090  
e: info@fredstorey.com

Old Crow Building  
2 Glen Rd. - Comber  
BT23 5EL - N.Ireland

COMFORT WITHOUT COMPROMISE

www.fredstorey.com